

City of Rochester

Elizabeth Park Project

The Elizabeth Street Park is located on Elizabeth Street, north of Second Street across from the Royal Park Hotel. It is a neighborhood-sized park facility in close proximity to condominiums, commercial and industrial development.

Based on a survey of area residents and the input of the City Beautiful Commission, some of the proposed improvements identified include additional vegetation, improved barrier-free paths, passive recreation amenities and gardens. As a result of the survey, the Elizabeth Park Project was developed to continue improvement and modification of this park into a passive open space which would help meet the recreation needs of the nearby neighborhoods and Royal Park hotel guests.

For the project to be a reality we will need the support of businesses, individuals, and non-profit partners that share a passion for enriching our community.

SPONSORSHIP AND NAMING OPPORTUNITIES:

Specific naming recognition will depend on the value of the amenity such as location, use, visibility, construction, cost, and more. Below is the price list for items currently available for sponsoring. In addition, we are open to suggestions and welcome creative ideas.

WATER WALL: \$50,000

PERGOLA: \$40,000

PATHWAYS: \$15,000 each (4 available)

BENCHES: \$2,000 each (4 available in Pergola, 10 available within the park)

- Benches will be maintained for a minimum of ten years, after which the bench will be evaluated on an on-going basis for safety
- Recognition plaque will be on the bench
- Includes cement pad

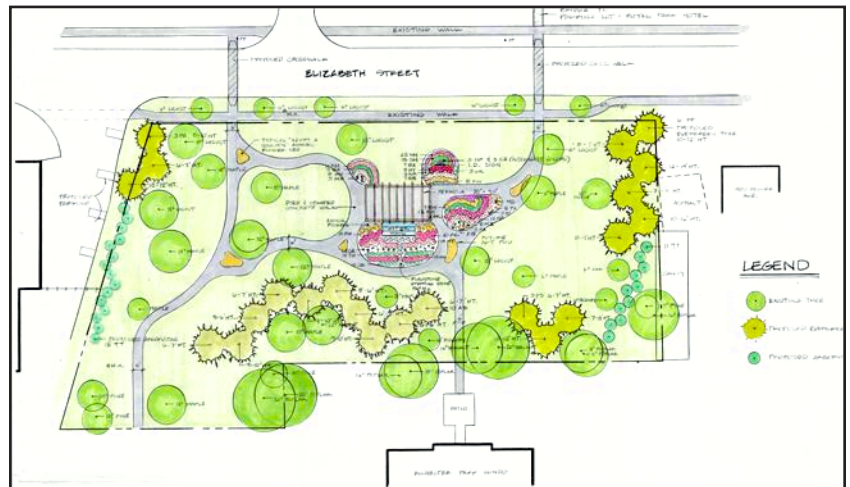
SCULPTURE: Price TBD (5 available)

- Based on art selected, must be mutually agreed upon.
- Sculpture can also be placed for one year terms for \$1,500

GARDENS: \$10,000 (4 available)

TREES: \$600 (26 arborvitae trees and 22 evergreen trees - mixed sizes)

- The tree type will vary depending on the needs of the park.
- Includes maintenance of your tree for one year, including watering. (Note: after the first year, the tree takes care of itself!) and recognition at the location of the tree



For more information or to make a donation please contact:

Nik Banda, Deputy City Manager
nbanda@rochestermi.org
248-651-9061